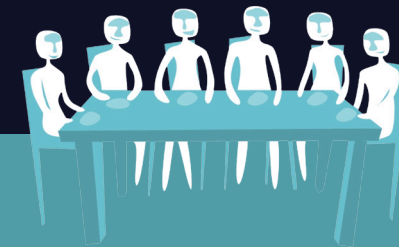




# Meal-for-Six



WARNING: THIS QUIZ MAY PUT YOU OFF YOUR FOOD



Toilet Twinning raises funds to enable people living in poor communities to have clean water, a basic toilet, and to learn about hygiene – a vital combination that helps end generational poverty.

## How does it work?

For £60, you can twin your toilet with a single, household latrine in an impoverished community.

You'll receive a framed certificate to hang in your loo – featuring a photo of your toilet twin, the latrine's location and even its GPS coordinates so you can find your twin online!



## Quiz

### QUESTION 1

Over a lifetime, the average person spends how long sitting on the toilet?

- a)  6 months
- b)  18 months
- c)  3 years

### QUESTION 2

Roughly what proportion of your poo, by weight, is made up of water?

- a)  a quarter
- b)  half
- c)  three quarters

### QUESTION 3

Who commonly used a sponge on a stick to wipe their bottoms with?

- a)  the Vikings
- b)  North American Indians
- c)  the Romans

### QUESTION 4

Which of the following is not an alternative word for a potty?

- a)  chamber pot
- b)  plant pot
- c)  thunder box

### QUESTION 5

In times past, human wee and dog poo were used in the tanning industry to:

- a)  remove hair from animal hides
- b)  mask the smell of rotting animal flesh
- c)  colour the skins yellow or brown

### QUESTION 6

What might happen to your wee if you eat beetroot, rhubarb or blackberries?

- a)  it might smell very sweet
- b)  it might turn a pinky-red colour
- c)  the amount of wee might double

### QUESTION 7

The term WC, used as an alternative name for a toilet, stands for:

- a)  Water Closet
- b)  Wee Cupboard
- c)  Water Chamber

### QUESTION 8

How many sheets of toilet paper does the average person use in one day?

- a)  29
- b)  57
- c)  76

### QUESTION 9

The 'Big Stink' is the name given to:

- a)  the time in the 1850s when Parliament had to shut down in the summer because of the smell from the poo in the River Thames.
- b)  the time in 1936 when a sewage works in London exploded, sending 15 tons of poo over the surrounding houses.

- c)  the time in 1967 when it was so cold in Scotland that all the pipes froze, causing poo to flow back through the toilets into people's houses.

### QUESTION 10

2.4 billion people worldwide don't have anywhere safe, clean or hygienic to go to the loo. This is:

- a)  22% of the world's population
- b)  34% of the world's population
- c)  42% of the world's population



6 happy diners + 1 meal = 1 

